

ADSL+ Wireless N300 Modem Router NB304n

Configuring in Layer2 PPPoE for Windows XP



Important Message

Your modem has been pre-configured, you do not need to follow each step of the set-up guide but should retain this document in case you need to manually configure your equipment.

To configure your PC/Laptop with your wireless password please proceed to step 4d. To change your wireless password please proceed to step 4.

Contents

1. Physical Connection
2. Network Configuration
3. Configuring Internet Connection in Layer 2 PPPoE
4. Configuring Wireless
5. IPTV
6. Change of Password

1. Physical Connection

Please refer to the Quick Reference Guide.

Please note: Have your router powered on and connected directly to your PC via Ethernet Cable before you begin, as these instructions are based on wired Ethernet connection

2. Network Configuration

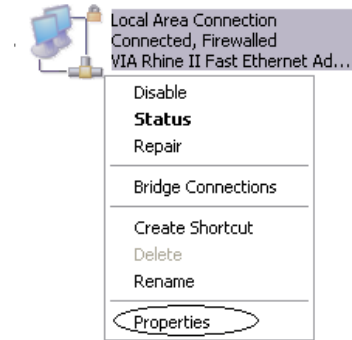
PPPoE connection does not require you to have an IP address or DNS settings manually encoded on your network card. PPPoE connection uses authentication to establish the Internet connection and its after doing this that your router is assigned an IP and DNS settings from TPG.

To begin, your PC needs to receive a private IP address from the router. Most ADSL routers have DHCP enabled by default that will take care of this.

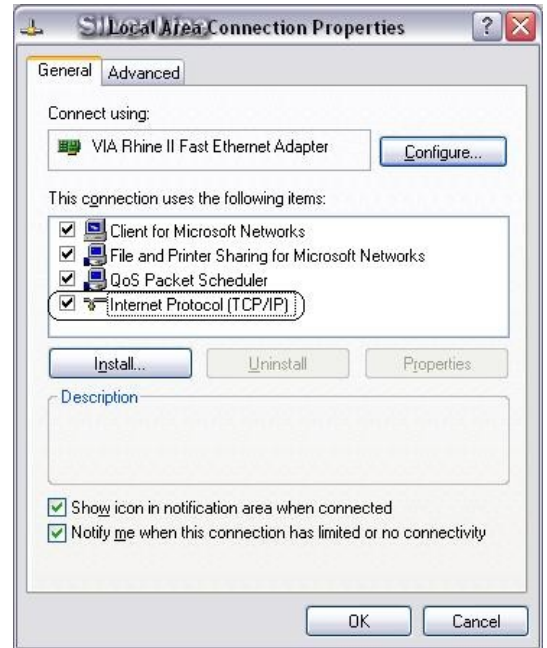
To ensure your Network Card is ready for this, please follow the following steps:

a. Click on **Start -> Settings -> Control Panel -> Network Connections**

b. Right click on Local Area Connection and select **Properties**



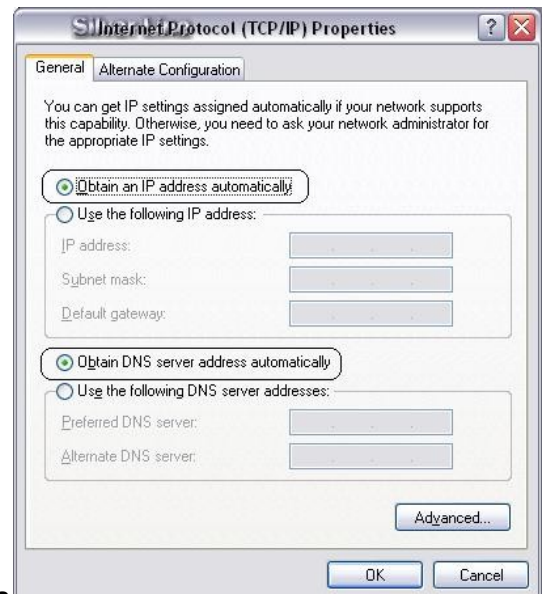
c. Double click on **Internet Protocol TCP/IP**



d. Ensure **"Obtain an IP address automatically"** is selected

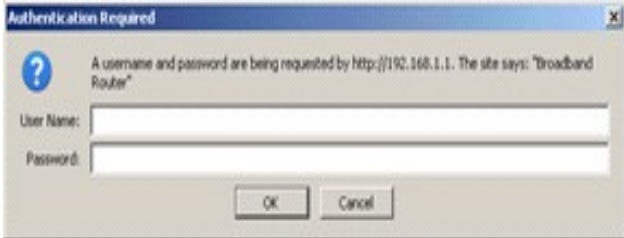
e. Ensure **"Obtain DNS server address automatically"** is selected

f. Click on **OK**

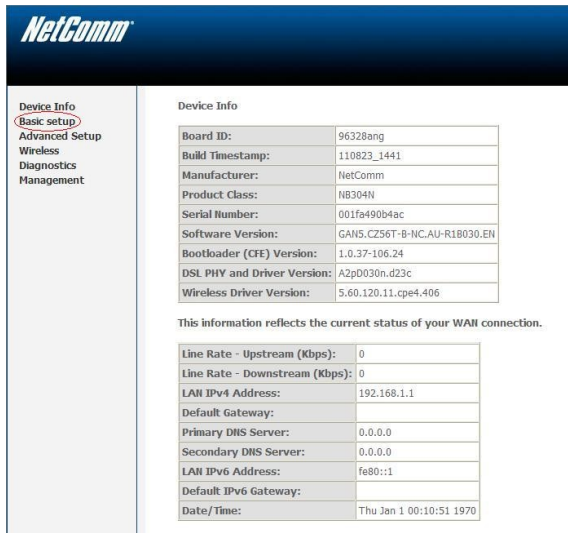


3. Network Configuration

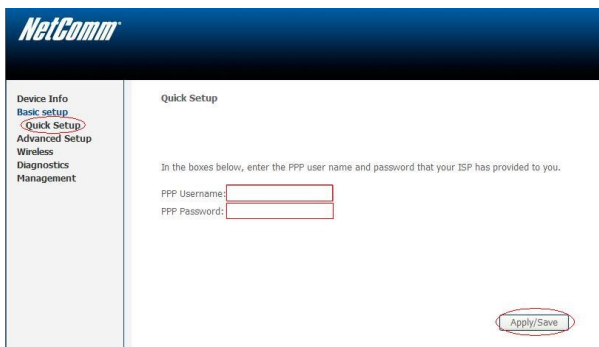
- Open your browser and in the address bar type **http://192.168.1.1** and press Enter
- Enter **admin** for both the username and password and click on **OK**. If you have changed the login credentials, please enter the current username and password for your router interface.



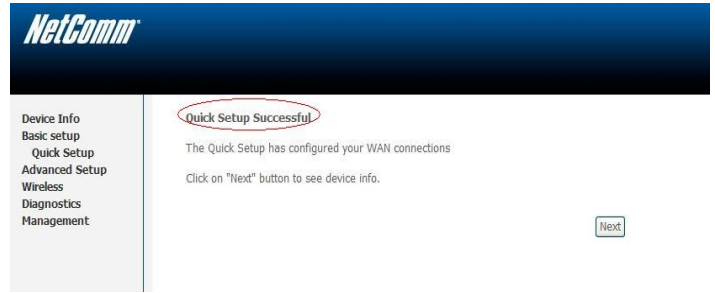
- You may now see this screen map.



- You can use **Quick Setup** to setup the router's ADSL connection with ease. Click **Basic Set up** then **Quick Setup**
- Enter your own TPG **username** and **password**. Click **Apply/Save** to save your authentication details.



- Quick Setup complete!** The setup wizard has completed.



4. Configuring Wireless

Things you need to know before you begin:

By default the NB304n that you purchased from TPG is configured with the following wireless security settings:

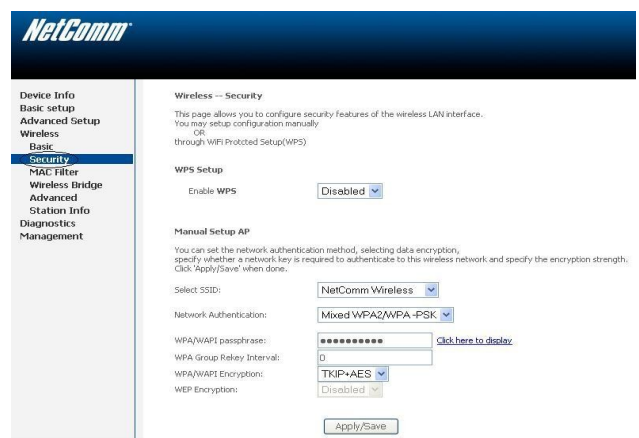
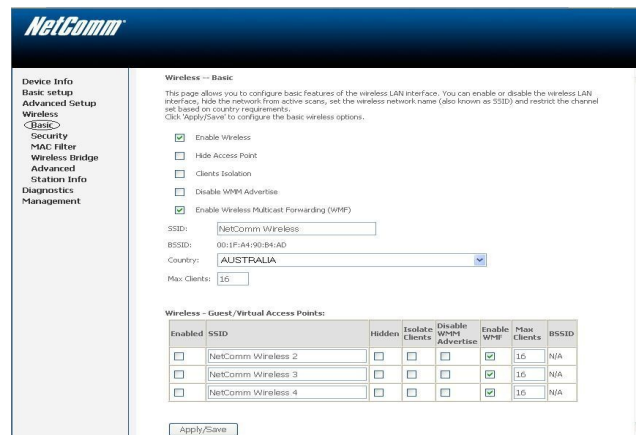
SSID (name for the wireless connection):

Netcomm Wireless (router default)

Authentication Type: WPA-PSK/WPA2-PSK

Encryption: TKIP/AES

Pre Shared Key: initially configured to be the same as your TPG password. You can enter your own text as an option.

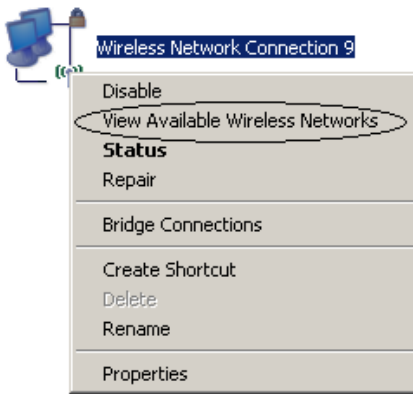


To use Wireless be sure that you already have set up your wireless adapter.

- To connect using wireless, go to **Start -> Control Panel**

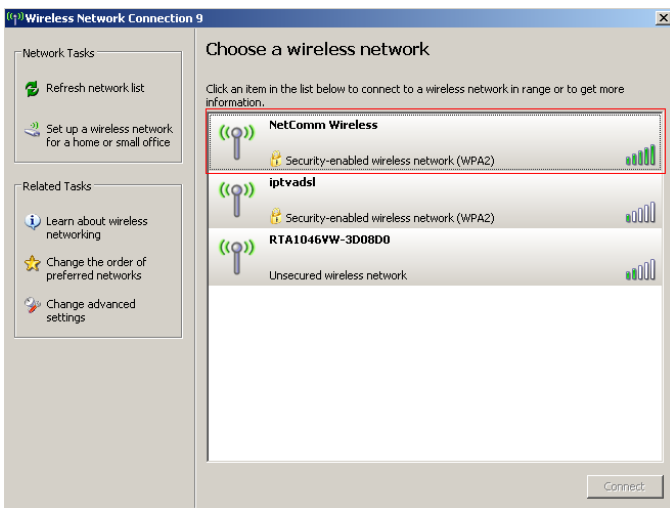


- b. Double click on 'Network Connections'
- c. Right click on **Wireless Network Connection** and click on 'View Available Wireless Networks'

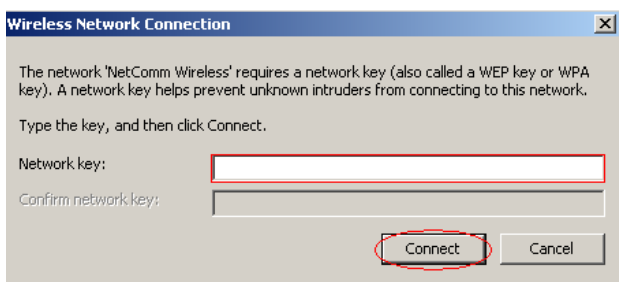


4. Configuring Wireless (continued...)

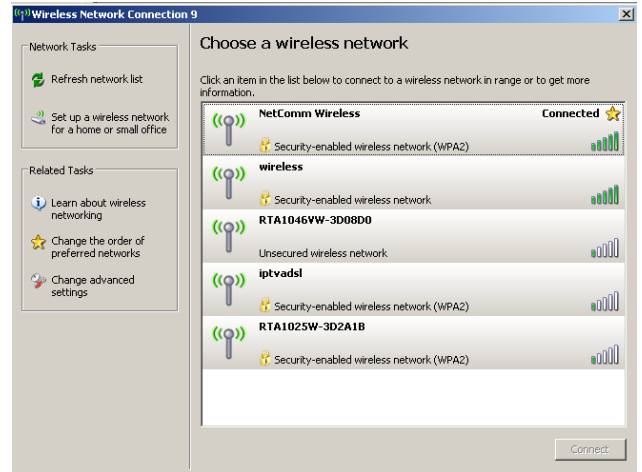
- d. Find the SSID (network name) of your router and click on **Connect**. By the default, the network name should be **Netcomm Wireless**.



- e. You will now be prompted to enter your **WPA Key / wireless password**. This is the same as your TPG password if you did not change it on the router.



- f. Click on **Connect**.
- g. You should now see your status as '**Connected**'.



5. IPTV

Your Netcomm NB304N modem is pre-configured with the TPG IPTV settings.

Should you require further assistance please contact the **TPG Helpdesk** on **131423** opt 2.

6. Change of Password

For security purposes we highly recommend that you change your password if you are using your default or if you believe your password security has been compromised.

To change your password, first please visit https://cyberstore.tpg.com.au/your_account/changepassword.html.

Your new password will take approximately 10-15 minutes to take effect, after which you must reconfigure your new password in your router.

Please Note: ADSL routers will by default be capable of automatic authentication. This means your router will use your credentials you have provided to make the Internet connection. Each time your router is powered on, it will initialize this automated authentication process after which your router will receive a public IP address (fixed or dynamic depending on your plan) and DNS settings from TPG

Support Information

For any installation, configuration or billing enquiries, please call: **13 14 23**
 Or you can email your queries to helpdesk@tpg.com.au
 Or visit www.tpg.com.au/helpdesk for further information.

The Help Desk service is available:
 Monday to Friday 8:00am - Midnight
 Weekends 9:00am - 9:00pm
 Public holidays 9:00am - 6:00pm



